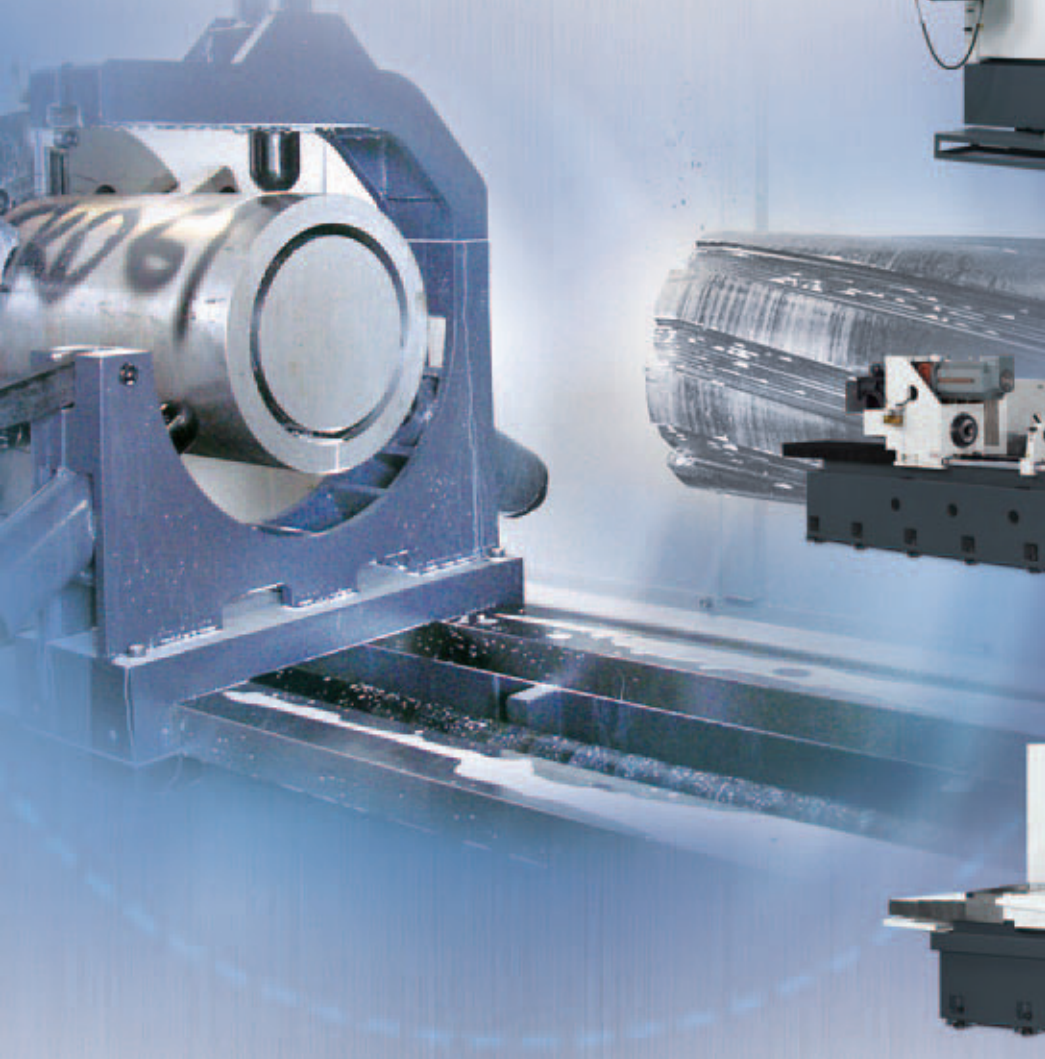




Horizontal Drilling Machine

臥式數控鑽床



TPA series
Trepan Drill Machine



BTA series
BTA Drill Machine



FW series
Gun Drill Machine



PW series
Gun Drill Machine

威鴻精密機械股份有限公司
WEI HONG PRECISION MACHINERY CO., LTD.

TREPAN DRILLING SERIES

套料鑽加工機系列

TPA series

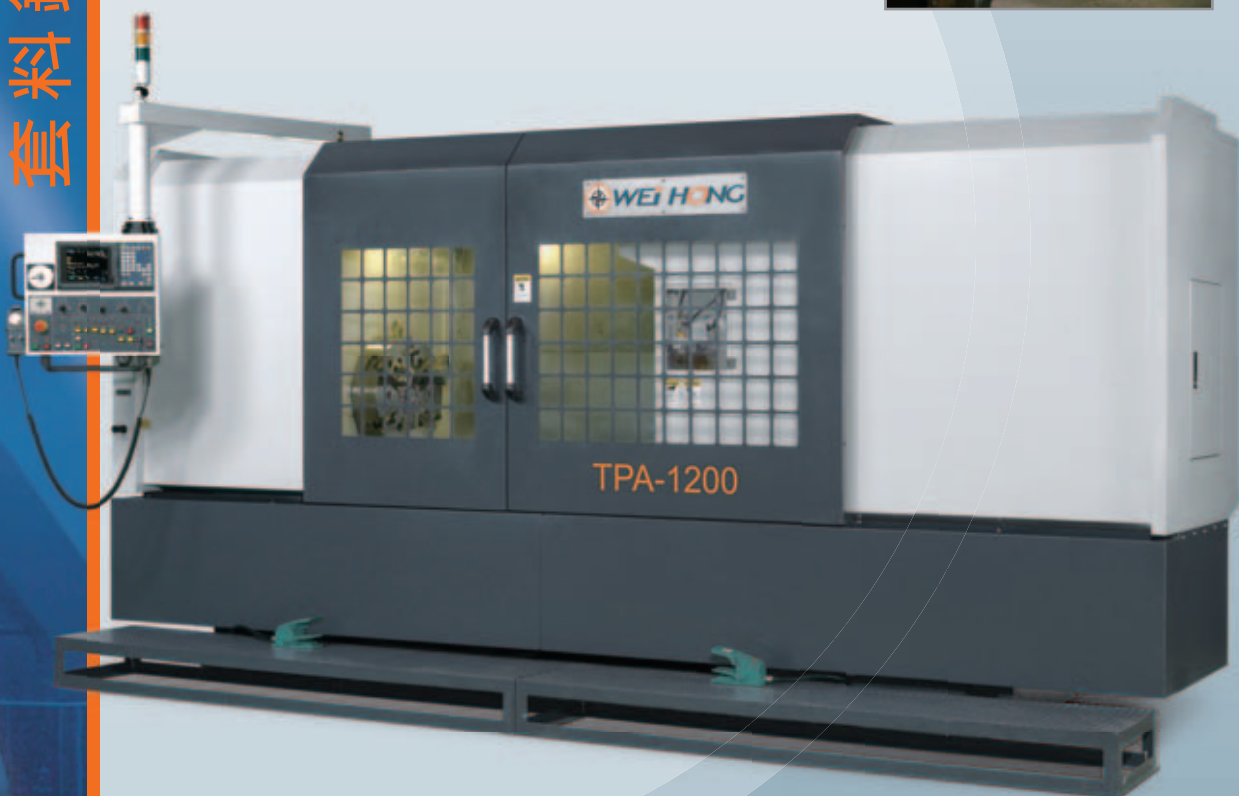
TPA-600, TPA-1200

適用的加工行業

- 石油探勘零件
- 鋼鐵材料加工
- 汽車產業零件
- 油壓設備零件

Application Industries

- Petroleum prospect parts
- Steel material machining
- Automobile parts
- Hydraulic equipment parts

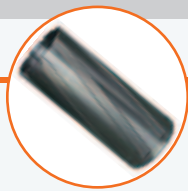


項目	Item	TPA-600	TPA-1200
最大加工孔徑	盲孔	Ø120 mm	Ø150 mm
	留芯	Ø250 mm	Ø300 mm
加工深度	Drilling depth	600 mm (單邊single side 300 mm)	1200 mm* (單邊single side 600 mm)
夾頭端面至主軸端面距離	Distance between chuck and spindle	200~1250 mm	200~2300 mm
油壓夾頭	Hydraulic chuck	18" (OP. 21")	21" (OP. 24")
油壓夾頭夾持力	Clamping force of hyd. chuck	249 km (25391kgf)	273 km (27838kgf)
Z軸行程	Z-axis travel	1100 mm	2150 mm
主軸錐度	Spindle taper	BT50	BT50
主軸轉速(4段變速)	Spindle speed (Gear box type)	10~750 rpm	10~650 rpm
控制器	Controller	三菱 MITSUBISHI	三菱 MITSUBISHI
主軸馬力	Spindle motor	37.5 kw	37.5 kw
Z軸進給馬力	Z-axis motor	7.0 kw	7.0 kw
Z軸進給速度(mm/分)	Z-axis rapid speed	8000 mm/min	8000 mm/min
切削液幫浦(HP)	Coolant pump	15HP x 189L x 30 kg/cm ²	15HP x 189L x 30 kg/cm ²
切削油箱容量(公升)	Coolant tank capacity (liter)	1000 ℓ	1000 ℓ
鼓式紙帶過濾機*	Drum type paper filter	200 ℓ/min	200 ℓ/min
最大夾持範圍	Clamping capacity	Ø450 x 600 mm	Ø600 x 1200 mm
機械重量	Machine weight	≒ 6000 kg	≒ 7000 kg
機台尺寸	Dimension	3800 x 3000 x 2350 mm	4500 x 3000 x 2350 mm

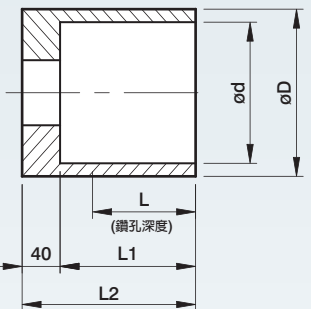
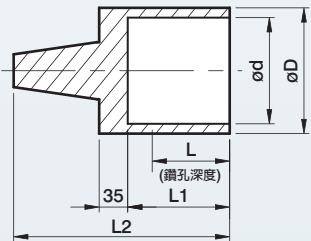
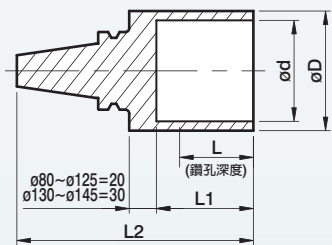
* 鼓式紙帶過濾機(選配) Drum type paper filter (Optional accessory)

* 必需另行配合使用600mm長刀具 It must be processed with 600mm (length) tool.

Unit: 50Hz/mm



Unit: mm



ATC TYPE

Part No.	Type	øD	ød	L	L1	L2	No. of Insert	Inner Cartridge	Outer Cartridge
VTATS08030	A	80	56	300	325	450	4	VT7T538100	VT8T538100
VTATS08530	A	85	61	300	325	450	4	VT7T538100	VT8T538100
VTATS09030	A	90	66	300	325	450	4	VT7T538100	VT8T538100
VTATS09530	A	95	71	300	325	450	4	VT7T538100	VT8T538100
VTATS10030	A	100	76	300	325	450	4	VT7T538100	VT8T538100
VTATS10530	A	105	81	300	325	450	4	VT7T538100	VT8T538100
VTATS11030	A	110	86	300	325	450	4	VT7T538140	VT8T538140
VTATS11530	A	115	91	300	325	450	4	VT7T538140	VT8T538140
VTATS12030	A	120	96	300	325	450	4	VT7T538140	VT8T538140
VTATS12530	A	125	101	300	325	450	4	VT7T538140	VT8T538140
VTATS13030	A	130	106	300	325	455	4	VT7T538140	VT8T538140
VTATS13530	A	135	111	300	325	455	4	VT7T538140	VT8T538140
VTATS14030	A	140	116	300	325	455	4	VT7T538140	VT8T538140
VTATS14530	A	145	121	300	325	455	4	VT7T538140	VT8T538140

BT-50 TYPE

Part No.	Type	øD	ød	L	L1	L2	No. of Insert	Inner Cartridge	Outer Cartridge
VTBTS15030	B	150	126	300	325	463	4	VT7T538180	VT8T538180
VTBTS15530	B	155	131	300	325	463	4	VT7T538180	VT8T538180
VTBTS16030	B	160	136	300	325	463	4	VT7T538180	VT8T538180
VTBTS16530	B	165	141	300	325	463	4	VT7T538180	VT8T538180
VTBTS17030	B	170	146	300	325	463	4	VT7T538180	VT8T538180
VTBTS17530	B	175	151	300	325	463	4	VT7T538180	VT8T538180
VTBTS18030	B	180	156	300	325	463	4	VT7T538180	VT8T538180
VTBTS18530	B	185	161	300	325	463	4	VT7T538180	VT8T538180
VTBTS19030	B	190	166	300	325	463	4	VT7T538220	VT8T538220
VTBTS19530	B	195	171	300	325	463	4	VT7T538220	VT8T538220

FLANGE TYPE

Part No.	Type	øD	ød	L	L1	L2	No. of Insert	Inner Cartridge	Outer Cartridge
VTFTS20030	F	200	176	300	340	380	4	VT7T538220	VT8T538220
VTFTS21030	F	210	186	300	340	380	4	VT7T538220	VT8T538220
VTFTS22030	F	220	196	300	340	380	4	VT7T538220	VT8T538220
VTFTS23030	F	230	206	300	340	380	4	VT7T538260	VT8T538260
VTFTS24030	F	240	216	300	340	380	4	VT7T538260	VT8T538260
VTFTS25030	F	250	226	300	340	380	4	VT7T538260	VT8T538260
VTFTS26030	F	260	236	300	340	380	4	VT7T538260	VT8T538260
VTFTS27030	F	270	246	300	340	380	4	VT7T538300	VT8T538300
VTFTS28030	F	280	256	300	340	380	4	VT7T538300	VT8T538300
VTFTS29030	F	290	266	300	340	380	4	VT7T538300	VT8T538300
VTFTS30030	F	300	276	300	340	380	4	VT7T538300	VT8T538300
VTFTS15050	F	150	123	500	540	580	4	VT7T538180	VT8T538180
VTFTS16050	F	160	133	500	540	580	4	VT7T538180	VT8T538180
VTFTS17050	F	170	143	500	540	580	4	VT7T538180	VT8T538180
VTFTS18050	F	180	153	500	540	580	4	VT7T538180	VT8T538180
VTFTS19050	F	190	163	500	540	580	4	VT7T538220	VT8T538220
VTFTT20050	F	200	173	500	540	580	8	VT7T538220	VT8T538220
VTFTT21050	F	210	183	500	540	580	8	VT7T538220	VT8T538220
VTFTT22050	F	220	193	500	540	580	8	VT7T538220	VT8T538220
VTFTT23050	F	230	203	500	540	580	8	VT7T538260	VT8T538260
VTFTT24050	F	240	213	500	540	580	8	VT7T538260	VT8T538260
VTFTT25050	F	250	223	500	540	580	8	VT7T538260	VT8T538260
VTFTT26050	F	260	233	500	540	580	8	VT7T538260	VT8T538260
VTFTT27050	F	270	243	500	540	580	8	VT7T538300	VT8T538300
VTFTT28050	F	280	253	500	540	580	8	VT7T538300	VT8T538300
VTFTT29050	F	290	263	500	540	580	8	VT7T538300	VT8T538300
VTFTT30050	F	300	273	500	540	580	8	VT7T538300	VT8T538300

BTA DRILLING SERIES

砲鑽加工機系列

BTA series

Rotating tool : BTA-2000 / 2500 / 3000

Rotating tool and workpiece :
BTA-2000S / 3000S / 4000S / 5000S / 6000S

適用的加工行業

- 航太工業零件
- 精密機械零件
- 石油探勘零件
- 鋼鐵材料加工
- 汽車產業零件
- 油壓設備零件
- 造船工業零件
- 電力能源工業

Application Industries

- Aerospace parts
- Precision machine parts
- Petroleum prospect parts
- Steel material machining
- Automobile parts
- Hydraulic equipment parts
- Ship-building parts
- Power generation and energy industry



項目		Item	BTA-2000	BTA-2500	
加工能力	孔徑	Drill capacity	Diameter	ø30~120 mm (150mm)	ø30~150 mm
	深度		Depth	2000 mm	2500 mm
Z軸行程	Z-axis travel		2600 mm	3600 mm	
主軸轉速	Spindle speed		Std. 2段變速 2 speeds 10~1200rpm	Std. 4段變速 4 speeds 10~900 rpm	
			(Opt. 4段變速 4 speeds 10~900 rpm)	-	
控制器	Controller		發那科 FANUC / 三菱 MITSUBISHI		
主軸馬力	Spindle motor		AC servo 37.5 kw	AC servo 37.5 kw	
Z軸馬達	Z-axis motor		AC servo 7.0 kw	AC servo 7.0 kw	
切削液幫浦	Coolant pump		15 HP flow rate 126 ℓ x2set	15 HP flow rate 126 ℓ x2set	
切削液箱容量	Coolant tank capacity		2400 ℓ	2600 ℓ	
冷卻機冷卻力	Cooler capacity		12500~15000 kcal/hr	12500~15000 kcal/hr	
機械重量	Net weigh		≒ 9500 kg	≒ 11500 kg	
機台尺寸	Dimension		≒ 8000x2400x2000 mm	≒ 10000x2400x2000 mm	

Unit: 50Hz/mm

GUN DRILLING SERIES

槍鑽加工機系列

FW series

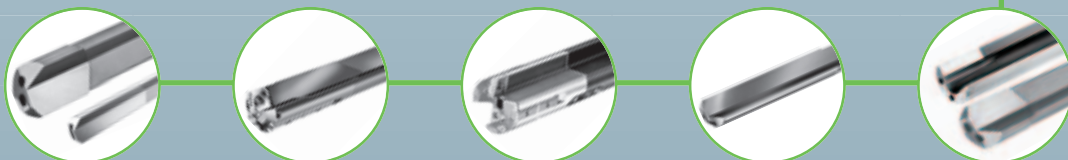
FW-1000, FW-1300, FW-2000, FW-2500, FW-3000

適用的加工行業

- 模具相關零件
- 航太工業零件
- 精密機械零件
- 醫療器材零件
- 光電設備零件
- 半導體設備零件
- 汽車產業零件
- 機車產業零件

Application Industries

- Molds and dies
- Aerospace parts
- Precision machine parts
- Medical instrument parts
- Photoelectric equipment parts
- Semi-conductor equipment parts
- Automobile parts
- Motorcycle parts



項目		Item	FW-1000	FW-1300	FW-2000	
加工能力	孔徑	Drill capacity	Diameter	ø3~30, ø3~40 mm	ø3~30, ø3~40 mm	ø3~25, ø3~30, ø4~40 mm
	深度		Depth	1000 mm	1000 mm	1500 (2000) mm
工作台面積	Working table size		800 x 1200 mm	800 x 1500 mm	1200 x 2200 mm	
T型槽	T-shape slot		18 x 140 x 5 mm	18 x 140 x 5 mm	22 x 150 x 8 mm	
X軸行程	X-axis travel		1000 mm	1300 mm	2000 (2500, 3000) mm	
Y軸行程	Y-axis travel		800 mm	800 mm	1000 (1300, 1600) mm	
Z軸行程	Z-axis travel		1650 mm	1650 mm	2000 (2500) mm	
主軸轉速	Spindle speed		無段 Stepless 100~8000 rpm/min			
控制器	Controller		發那科 FANUC / 三菱 MITSUBISHI			
主軸馬力	Spindle motor		AC servo 7.5 kw			
X軸馬達	X-axis motor		AC servo 4.5 kw	AC servo 4.5 kw	AC servo 7.0 kw	
Y軸馬達	Y-axis motor		AC servo 3.5 kw	AC servo 3.5 kw	AC servo 4.5 kw	
Z軸馬達	Z-axis motor		AC servo 2.0 kw			
快速進給	Rapid speed		X,Y-axis 6000 mm/min, Z-axis 10000 mm/min			
切削液幫浦	Coolant pump		10 HP flow rate 75 ℓ /60 kg			
切削液幫浦	Coolant pump		7.5 HP flow rate 30 ℓ /100 kg			
切削液箱容量	Coolant tank capacity		Max. 1400 ℓ			
冷卻機冷卻力	Cooler capacity		7500~9000 kcal/hr			
鼓式紙帶過濾機*	Drum type paper filter		200 ℓ /min			
工作台載重量	Table load capacity		3000 kg	4000 kg	15000 kg	
機械重量	Net weigh		≒ 10000 kg	≒ 13000 kg	≒ 20000 kg	
機台尺寸	Dimension		2600x3500x2500 mm	3000x3500x2500 mm	6500x6000x3500 mm	

* 鼓式紙帶過濾機(選配) Drum type paper filter (Optional accessory)

Unit: 50Hz/mm

PW series

PW-1035-8D, PW-600-4D, PW-800-2D, PW-1500-2D

適用的加工行業

- 模具相關零件
- 光電設備零件
- 航太工業零件
- 機車產業零件
- 精密機械零件
- 氣動工具零件
- 醫療器材零件
- 油壓設備零件

Application Industries

- Molds and dies
- Aerospace parts
- Precision machine parts
- Medical instrument parts
- Photoelectric equipment parts
- Motorcycle parts
- Air tool parts
- Hydraulic equipment parts



項目		Item	PW-1035-8D	PW-600-4D	PW-800-2D	PW-1500-2D
加工能力	孔徑	Drill capacity	Diameter $\phi 4\sim 25$ mm	$\phi 4\sim 25$ mm	$\phi 2\sim 10, \phi 4\sim 25$ mm	$\phi 3\sim 25, \phi 4\sim 40$ mm
	深度	Depth	1000 mm, 350 mm	600 mm	800 mm	500~1500 mm
Z軸行程	Z-axis travel		1400 mm, 750 mm	1000 mm	1200 mm	2000 mm
主軸轉速	Spindle speed		8000 rpm	8000 rpm	12000 rpm	8000 rpm
控制器	Controller		發那科 FANUC / 三菱 MITSUBISHI			
主軸馬力	Spindle motor		AC servo 7.5 kw(4pcs)	AC servo 7.5 kw 2pcs	AC servo 3.75 kw	AC servo 7.5 kw 2pcs
Z軸馬達	Z-axis motor		AC servo 3.5 kw(2pcs)	AC servo 3.5 kw	AC servo 2.0 kw	AC servo 3.5/4.5 kw
切削液幫浦	Coolant pump		15 HP flow rate 116 ℓ (4pcs)	15 HP flow rate 116 ℓ 2pcs	10 HP flow rate 60 ℓ /70 kg	15 HP flow rate 126 ℓ /50 kg
切削液幫浦	Coolant pump		-	10 HP flow rate 40 ℓ 2pcs	10 HP flow rate 32 ℓ /25 kg	15 HP flow rate 66 ℓ /100 kg
切削液箱容量	Coolant tank capacity		Max. 2000 ℓ	Max. 2000 ℓ	Max. 1000 ℓ	Max. 1600 ℓ
冷卻機冷卻力	Cooler capacity		12500~15000 kcal/hr	12500~15000 kcal/hr	7500~9000 kcal/hr	7500~9000 kcal/hr
鼓式紙帶過濾機*	Drum type paper filter		500 ℓ /min	500 ℓ /min	200 ℓ /min	200 ℓ /min
機械重量	Net weigh		\approx 5000 kg	\approx 5000 kg	\approx 3000 kg	\approx 5000 kg
機台尺寸	Dimension		6500x4310x2000 mm	4200x3300x2200 mm	4900x3600x2200 mm	5300x3300x2200 mm

* 鼓式紙帶過濾機(選配) Drum type paper filter (Optional accessory)

* 本系列為客製化商品 The series is available for special order.

Unit: 50Hz/mm



威鴻精密機械股份有限公司 WEI HONG PRECISION MACHINERY CO., LTD.

429 台灣 台中縣神岡鄉豐洲路 1065 號

No.1065, Fongjhou Rd., Shengang Township, Taichung County 429, Taiwan

Tel : 886-4-25610595

Fax : 886-4-25632426

E-mail : sales@weihong999.com.tw

www.weihong999.com.tw

(附設加工廠 / With Deep Hole Drilling Plant)

新盈國際有限公司 NEW PROFIT INT'L CO., LTD.

華南區總經銷 :

鼎企模具配件有限公司

DINGQI MOLD COMPONENTS CO., LTD.

廣東省東莞市企石鎮聯興工業園

Lianxing Industrial Estate, Qishi Town, DongGuan City, Guang Dong Province, China

Tel : 0769-8671 8568

Fax : 0769-8671 8567

E-mail: deep4hole@163.com

(附設加工廠 / With Deep Hole Drilling Plant)

華東區總經銷 :

蘇州威鴻鑫精密機床有限公司 SUZHOU WEI HONG XIN PRECISION MACHINERY CO., LTD.

蘇州市北橋華東機械城 13 棟 115~116 號

Suzhou Bei Qiao Hua Dong MACHINERY CITY 13th buidings No.115-116

Tel : 0512-6580 7158

Fax : 0512-6580 7159

E-mail: 01@weihongxin.com

- 本公司對產品不斷研究改良，機械規格及設計特性若有變更，恕不另行通知。
- All specifications, dimensions and design characteristics are subject to change without prior notice.